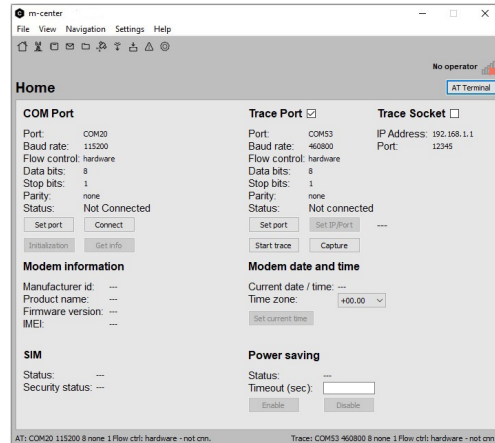


Cellular evaluation software for Windows

Highlights

- Interactive, simple evaluation of u-blox cellular modules
- Access to main functionality and configuration parameters
- Learn AT commands using the GUI interfaces thanks to embedded AT terminal
- Trace LTE/UMTS/GPRS/GSM module activity
- PIN, call, and SMS management
- Communication with u-blox GNSS modules
- Free of charge



Product description

The m-center cellular evaluation software is a powerful and easy to use tool for evaluating, configuring, and testing of u-blox cellular modules. It includes an intuitive, easy to understand and easy to use graphical interface. m-center is available free-of-charge.

m-center includes

- AT command terminal with user defined commands
- AT commands scripting
- PIN management
- Call management
- SMS management
- Data context configuration
- Communication with u-blox GNSS modules
- Intelligent driver detection
- Firmware download Over The Air (FOTA)
- Firmware download Over AT commands (FOAT)
- eCall IVS simulator
- Utilities section

Operating systems

m-center supports PCs running Windows 10 onwards (x64).

Configuration and control options

m-center provides a convenient means to configure u-blox cellular modules and save the configuration in the module EPROM. It is also possible to view and edit SIM phonebook entries, send text messages, and communicate with the cellular module using AT commands.

m-center can be used to restore the cellular module's factory-programmed settings and to perform traces. In addition, when using u-blox cellular evaluation kits, m-center allows for simple communication with the onboard GNSS module.

m-center implements the eCall IVS simulator; using it, customers can start an eCall communication, defining the content of MSD data and properly filling the desired messages.

Visualization

The very simple graphical user interface allows the user to perform common LTE/UMTS/GPRS/GSM tasks and the embedded AT terminal shows all the AT commands trace in order to decrease the learning curve of the AT commands set. All the AT terminal activity can be saved to a text file.

Enabling the trace feature allows users to save internal LTE/UMTS/GPRS/GSM module activity to facilitate sending of binary data to u-blox customer support.

Ordering information

m-center is available free of charge and can be downloaded from our website.

Legal Notice:

u-blox reserves all rights to this document and the information contained herein. Products, names, logos and designs described herein may in whole or in part be subject to intellectual property rights. Reproduction, use, modification or disclosure to third parties of this document or any part thereof without the express permission of u-blox is strictly prohibited.

The information contained herein is provided "as is". No warranty of any kind, either express or implied, is made in relation to the accuracy, reliability, fitness for a particular purpose or content of this document. This document may be revised by u-blox at any time. For most recent documents, please visit www.u-blox.com.
Copyright © 2022, u-blox AG

Further information

For contact information, see www.u-blox.com/contact-u-blox.

For more product details and ordering information, see the product data sheets.